

Accessing Google Earth 3D Visualisations

Reference FDS/FDM/POL/020

Prepared by E. Ross

Authorised by C. Jesse

Issue 4 2nd September 2015

Thackeray House, 189-199 West Street, Fareham,
Hampshire, PO16 0EN, England

Tel: +44 (0)1329 223663 Fax: +44 (0)1329 223664

Registered in England No 4041206

Revision History

Issue	Date	Revision author	Change
4	2 nd September 2015	E. Ross	Removed support for Google Chrome
3	24 th July 2015	E. Ross	Added section on allowing mixed content in Firefox
2	21 st July 2015	E. Ross	Wording and template updates
1	2 nd April 2015	E. Ross	Original Issue

Contents

Overview	5
Web Browsers	5
Firefox	6
Opera	9
Using the 3D Visualisations	10

Figures

Figure 1: Firefox Graph View	6
Figure 2: Firefox loading 3D visualisation.....	6
Figure 3: Firefox Google Earth Activation screen	7
Figure 4: Firefox Plug-in permission screen	7
Figure 5: Firefox with 3D visualisation loaded	7
Figure 6: Blank square where 3D Visualisation should appear	8
Figure 7: Enabling mixed content in Firefox.....	8
Figure 8: Opera Graph View	9
Figure 9: Opera with 3D visualisation loaded.....	9
Figure 10: 3D visualisation controls.....	10

Overview

Flight Data Services uses the "Google Earth Plug-in" to display in-browser 3D visualisations of flight tracks on the graphing page of the POLARIS website.

Google has deprecated the "Google Earth Plug-in" as support of the Netscape Plugin Application Programming Interface (NPAPI) technology which it uses is gradually being withdrawn from commonly used web browsers. This deprecation disables the in-browser visualisation unless you explicitly enable the NPAPI technology. If your in-browser visualisations have stopped working, please follow the steps in this guide to enable the NPAPI technology in your browser which will re-enable the Google Earth plug-in.

Please note that the downloading of Google Earth (.kml/.kmz) or X-Plane (.fdr) visualisation files from the POLARIS website's Flight Details Page or Flight Search page to your computer is unaffected by the deprecation of the NPAPI Plug-in.

Flight Data Services are exploring the use of alternative technologies to support in-browser 3D visualisations in the future.

Although the information provided is believed to be correct at time of publication, web browsers may have changed by the time of reading, so please keep in mind that alternative methods may be required to view the 3D visualisations.

Web Browsers

First, you should first install the latest version of the Google Earth Plug-in from:

<https://www.google.com/earth/explore/products/plugin.html>

You will need to use a system meeting the requirements specified at:

<https://support.google.com/earth/answer/166094>

Flight Data Services do not support the 3D visualisations feature in either the Microsoft Internet Explorer, Microsoft Edge or Google Chrome web browsers.

Firefox

1. Click the “Generate” button:

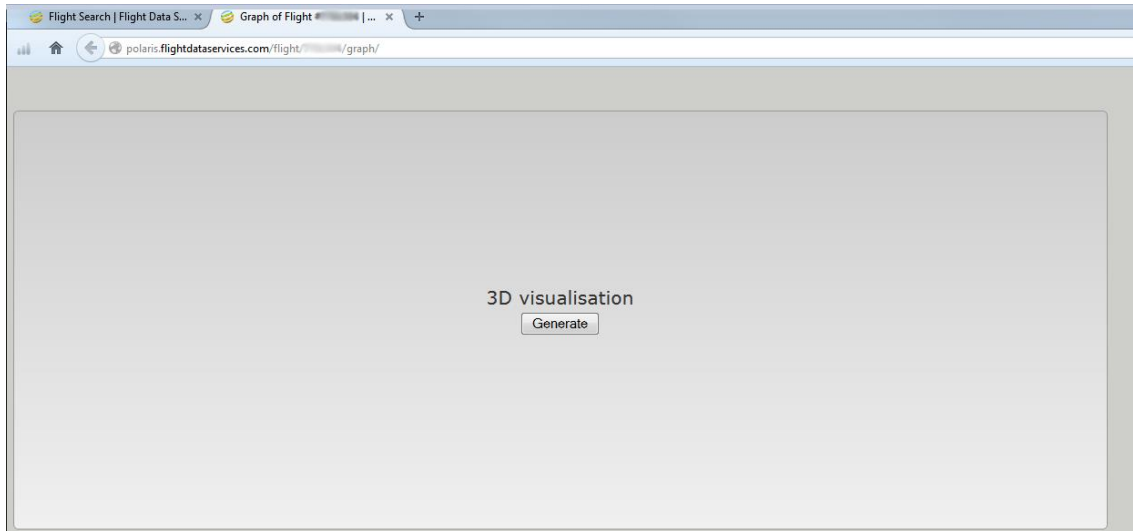


Figure 1: Firefox Graph View

2. The 3D visualisation will start to load:

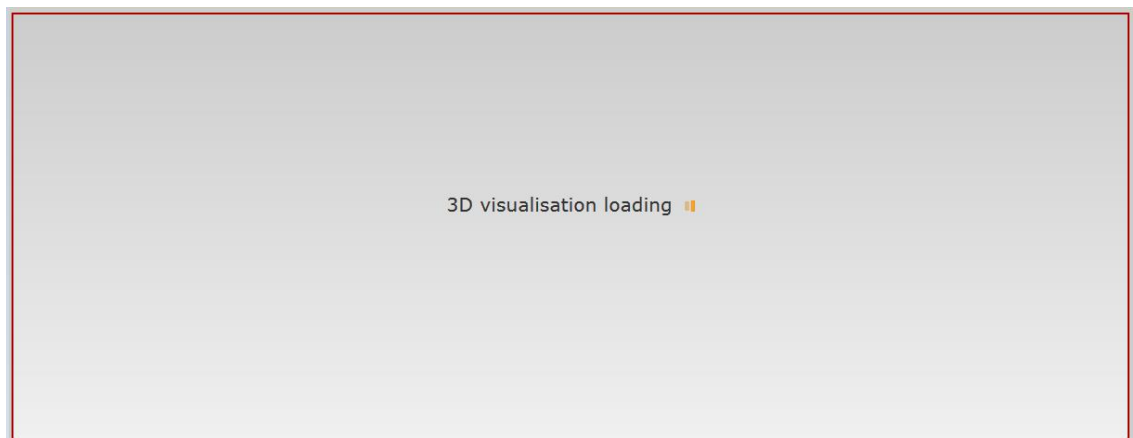


Figure 2: Firefox loading 3D visualisation

3. Click "Activate Google Earth" if required:

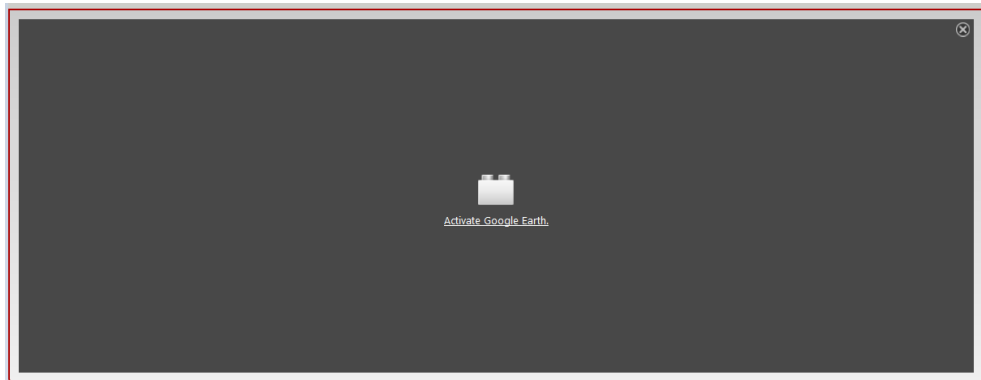


Figure 3: Firefox Google Earth Activation screen

4. On the next screen, click "Allow and Remember" if required:

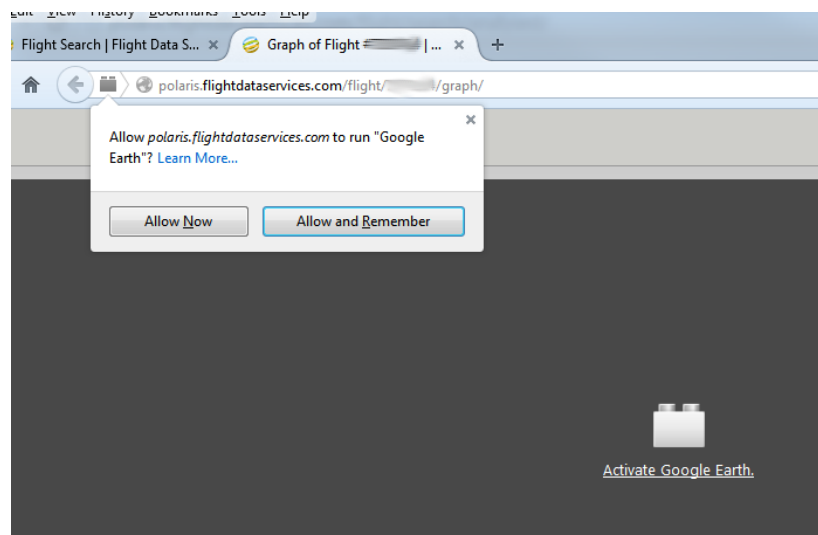


Figure 4: Firefox Plug-in permission screen

5. Re-load the page and click the "Generate" button again. This time, the 3D visualisation will run (if it did not run the first time):

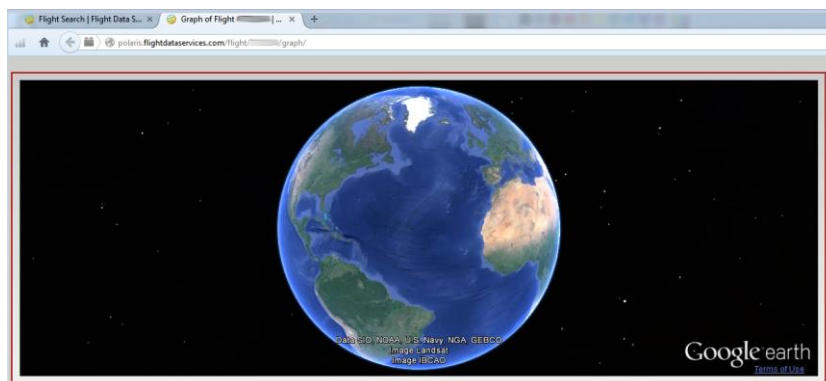


Figure 5: Firefox with 3D visualisation loaded

Mixed content

You can also view the 3D visualisation in the Flight Details page by clicking *Visualisation* -> *View replay in browser* -> *Download*. However, Firefox's settings may mean that just a blank square appears where the 3D visualisation should appear:

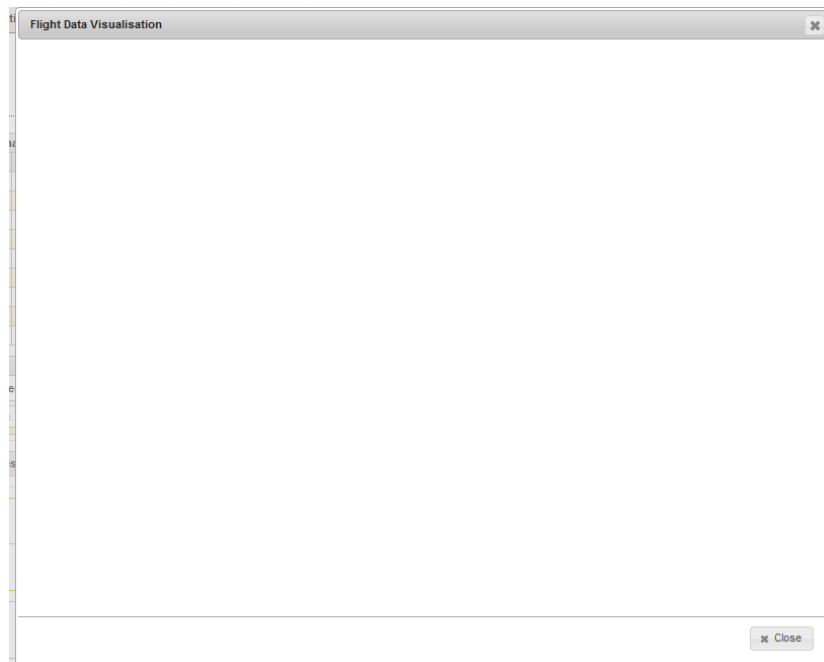


Figure 6: Blank square where 3D Visualisation should appear

If this occurs, click the shield icon in the address bar, then *Options*, then *Disable protection for now*:

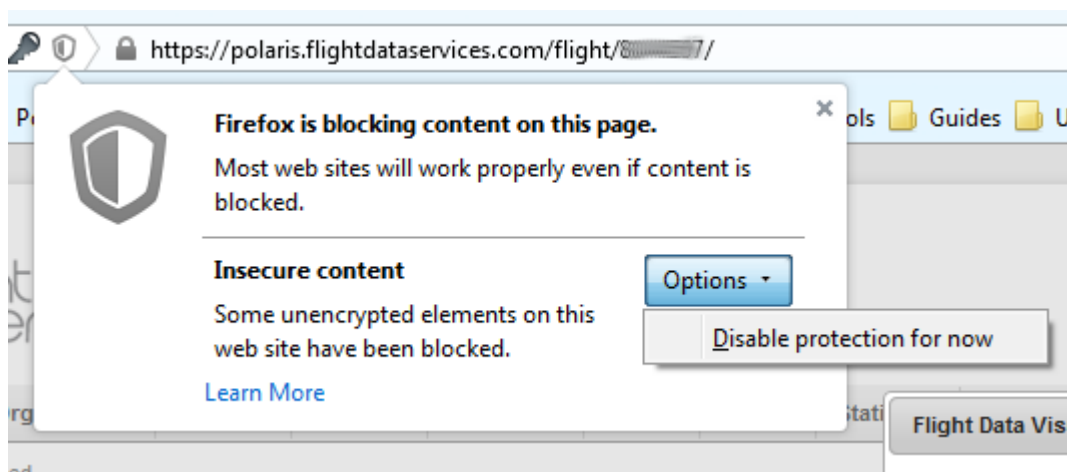


Figure 7: Enabling mixed content in Firefox

The page will then re-load so you will have to re-request the visualisation, but it will reload this time.

Opera

Although the Google Earth Plug-in is not officially supported in the Opera web browser, it may also be used to load the Plug-in.

1. Click the "Generate" button:

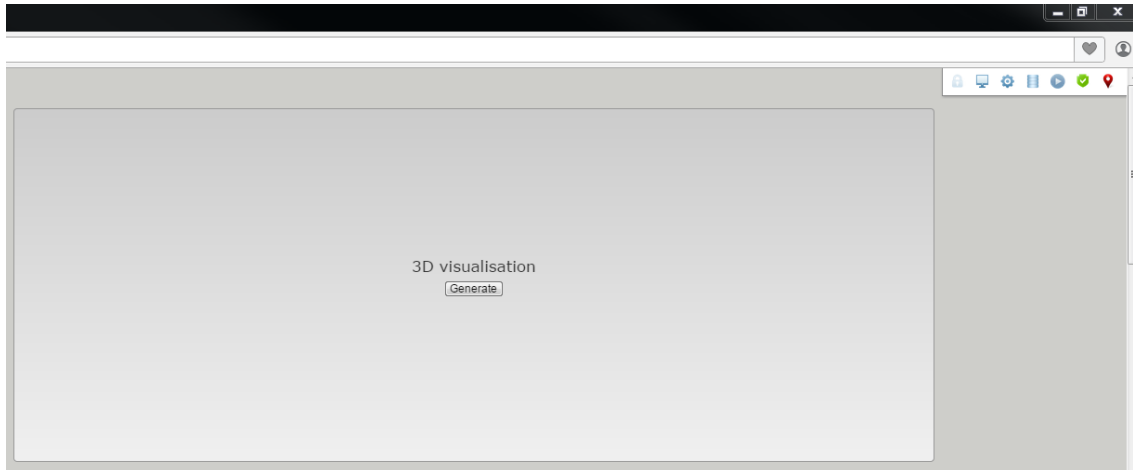


Figure 8: Opera Graph View

2. The 3D visualisation will load:



Figure 9: Opera with 3D visualisation loaded

Using the 3D Visualisations

Once loaded, use the controls on the bottom left of the 3D visualisation to view the flight:

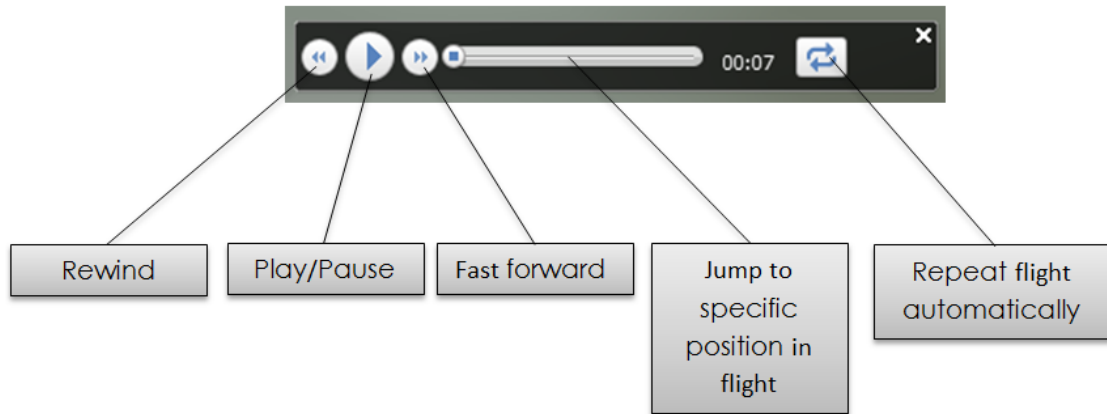


Figure 10: 3D visualisation controls